



Total funds collected represent funds collected from all sources during the period of **Jan 1, 2015** thru **March 31, 2015**. All expenses are as of the same time period. This information does not reflect the most recent data.

Harvest Point Fellowship Church Income & Expenses

January - March, 2015

	Total	% of Income
Income		
Tithes & Offering	\$131,125	97%
Special Donations	3,000	2%
Event Income	1,955	1.5%
Other Income	1,001	
Total Income	\$137,080	100%
Expenses		
Operation Expenses	\$63,112	46%
Ministry Expense	8,625	6%
Personnel Expenses	35,700	26%
Other Expenses	10,514	8%
Bank Charges	60	
Total Expenses	\$118,010	86%
Net Income	\$19,070	

1st Quarter 2015 Results



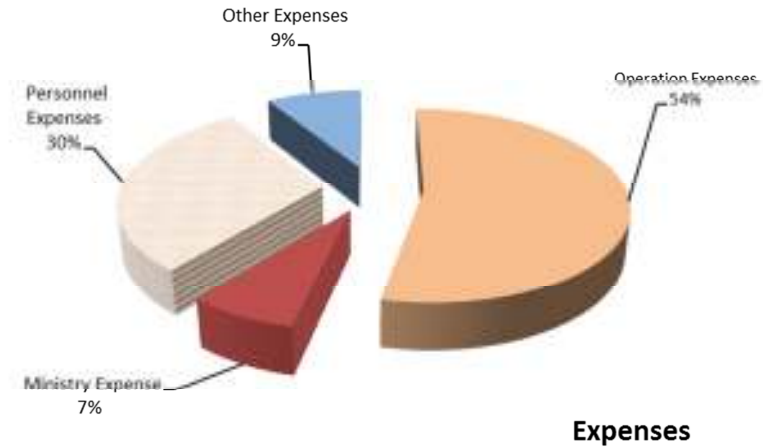
	Jan	Feb	Mar
Income	\$42,385	\$43,063	\$51,631
Expenses	\$37,059	\$40,400	\$40,551



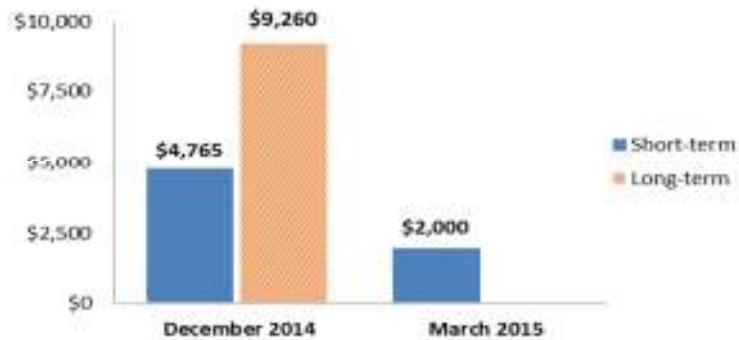
BALANCE SHEET

What we OWN - ASSETS

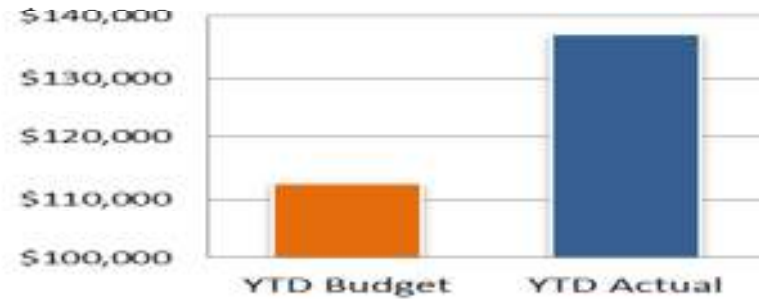
(Short-term) Assets	Value
Checking Account Balance	\$11,303.40
Savings Account Balance	13,958.80
(Long-term) Assets	Value
Signage	\$4,324.50
Musical Instruments	2,363.87
Sound Equipment	22,595.00
Church Chairs	5,580.00
Furniture & Fixtures	9,703.86
Laptop Computers	607.45
TOTAL ASSETS	\$70,436.88



What we OWE – LIABILITIES



YTD Actual vs Budget



YTD Budget \$112,530
YTD Actual \$137,080

All balances are as of March 31, 2015